



# THE EDDEM NETWORK

## *The EdDem Network's Fall 2025 Newsletter*

### **Announcements**

### *Upcoming Workshop – “Integrating Social & Biomedical Science in Dementia Research”*

- May 14–15, 2026 | University of Wisconsin–Madison
- A two-day workshop designed to strengthen interdisciplinary approaches to Alzheimer’s disease and related dementias (ADRD)
  - Engage with leading scholars across social, population health, and biomedical fields.
  - Gain hands-on exposure to biomarker and imaging methods.
  - Explore how social and environmental factors shape ADRD risk across the life course. Participate in conceptual training, facility tours, and collaborative networking aimed at building grant-ready teams.
- **Travel stipends available for early-career participants:** [Apply here](#)
- [Register and see full details here](#) and [Link for Shareable Flyer](#)

### *Coming Soon: Year 5 Pilot PI RFA*

- The EdDem Network will soon release its Year 5 Request for Pilot Proposals. These one-year grants (up to \$40,000 total costs) support research advancing the education–dementia relationship in one or more of the Network’s three critical areas: early-life factors, mid-life socioeconomic and psychosocial pathways, and biological mechanisms. Proposals addressing racial, ethnic, sex, or geographic disparities are especially encouraged.

- Applications will be due **February 20, 2026**.
- [See full details here](#) and for [downloadable copy of RFA here](#)

## *Updates to the Data Resource Tool*

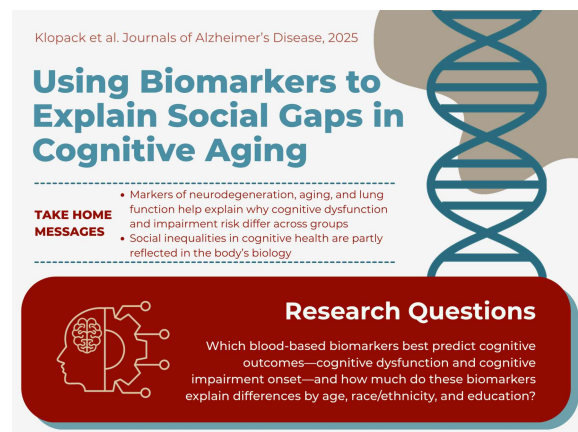
- Our interactive [data resource tool](#) collates information on datasets linking early educational environments, AD biomarkers and genetic risk factors, and later-life cognition and dementia.
- Updates include:
  - 5 new datasets, including the National Health and Aging Trends Study (NHATS), Panel Study of Income Dynamics (PSID), and Understanding America Study (UAS).
  - Expanded information on cognitive assessments.
- [Explore the tool on our website](#).

## *Pilot PI Updates*

- We've launched a [new webpage](#) where you can view project information and recent activity of EdDem Pilot PIs.
- Studies funded by pilot awards have led to **10** publications over 4 years.

## *Infographic Initiative*

- We are producing [infographics](#) to help affiliates translate research findings for broader audiences.
- Infographics summarize research related to EdDem's critical areas.
- See an example here: [Using Biomarkers to Explain Social Gaps in Cognitive Aging \(Klopack et al., 2025\)](#)
- Contact us if you would like an infographic designed for a recent publication:  
[ebddp\\_network@umd.edu](mailto:ebddp_network@umd.edu)



## *Recent Publications from EdDem Affiliates*

- Since 2022, affiliates have published **154** journal articles on education–dementia. Access the [publication tool](#) to view all papers.
- A selected sample of recent publications include:
- **Critical Area 1: Early life factors and the education–dementia relationship**

- Ailshire et al., 2025. *The role of educational attainment and quality in US regional variation in prevalence of dementia and CIND*. DOI: [10.1371/journal.pone.0332410](https://doi.org/10.1371/journal.pone.0332410)
- Meza et al., 2025. *Intergenerational upward educational mobility and cognitive performance: results from the Study of Latinos–Investigation of Neurocognitive Aging (SOL-INCA)*. DOI: DOI: [10.1002/alz.70214](https://doi.org/10.1002/alz.70214)
- Muller et al., 2025. *Education and midlife cognitive functioning: Evidence from the High School and Beyond cohort*. DOI: [10.1002/alz.70015](https://doi.org/10.1002/alz.70015)
- **Critical Area 2: Mid-life socioeconomic, social, and psychological mediators of education and dementia**
  - Cho et al., 2025. *Changes in marital and health status as risk factors for a subsequent negative wealth shock: A population-based longitudinal study in the United States, 1995–2020*. DOI: [10.1016/j.socscimed.2024.117905](https://doi.org/10.1016/j.socscimed.2024.117905)
  - Frazier, 2025. *Perceptions matter: Physical neighborhood disadvantage and older adults’ emotional health*. DOI: [10.1016/j.wss.2024.100266](https://doi.org/10.1016/j.wss.2024.100266)
  - Truskinovsky et al., 2025. *Changes in Long-term Services and Supports Among Adults With and Without Dementia During the First Year of the COVID-19 Pandemic*. DOI: [10.1093/innov/igaf003](https://doi.org/10.1093/innov/igaf003)
- **Critical Area 3: Biological mechanisms linking education to dementia**
  - Klopach et al., 2025. *How much can biomarkers explain sociodemographic inequalities in cognitive dysfunction and cognitive impairment? Results from a machine learning model in the Health and Retirement Study*. DOI: [10.3233/JAD-240840](https://doi.org/10.3233/JAD-240840)
  - Walsemann et al., 2025. *APOE genotype and cognitive decline: Educational context as a moderator of genetic risk*. DOI: [10.1093/geronb/gbaf110](https://doi.org/10.1093/geronb/gbaf110)
  - Ware et al., 2025. *Associations of Perceived Neighborhood Factors and Alzheimer’s Disease Polygenic Score with Cognition: Evidence from the Health and Retirement Study*. DOI: [10.1101/2025.01.06.24317803](https://doi.org/10.1101/2025.01.06.24317803)

## Related Events

### *SPARC Webinar: Applied Introduction to Sequence Analysis*

- February 24, 2026 | 1:00-2:00 PM ET | Virtual
- **Speaker:** Heide Jackson, Associate Research Professor and Data, Statistics, and Computing Specialist, Southern Population Aging Research Center (SPARC), University of Maryland–College Park.
- **Description:** The Southern Population Aging Research Center (SPARC) is hosting an interactive webinar on sequence analysis. Sequence analysis examines how the ordering of events matters for later outcomes and is ideal for aging and life course studies. This webinar will describe key concepts in

sequence analysis and provide examples of code to run in Stata. This interactive session will welcome participant engagement and questions

- This event is open to all. [Register here](#).
- [Flyer for sharing](#)

## *Alzheimer's Association Interdisciplinary Summer Research Institute (AA-ISRI)*

- August 3–7, 2026 | Chicago, IL
- Applications for the [2026 Alzheimer's Association Interdisciplinary Summer Institute](#) are now open.
- Attend AA-ISRI to
  - Gain knowledge of basic clinical and biological aspects of Alzheimer's and dementia.
  - Hone essential research skills and learn about emerging research designs and analytical methods.
  - Make connections with leaders and peers in the field.
- Applications are due March 9, 2026. [Apply Now](#).

## Archived Resources and Webinars

If you missed recent events, recordings and slide decks are available online:

- [Data Done Right: Practical Strategies for Creating Shareable Research Data](#)
- *See all archived webinars [here](#)*



[Click Here for All Upcoming EdDem Events and Webinars](#)

The EdDem Network is a partnership between the University of Maryland, the University of Michigan, and the University of Wisconsin - Madison.

### [EdDem Website](#)

Jennifer Doiron

EdDem Project Coordinator  
Maryland Population Research Center  
2105 Morrill Hall, Bldg 040  
College Park, MD 20742  
Tel. 301-405-6403 Email.  
[ebddp\\_network@umd.edu](mailto:ebddp_network@umd.edu)